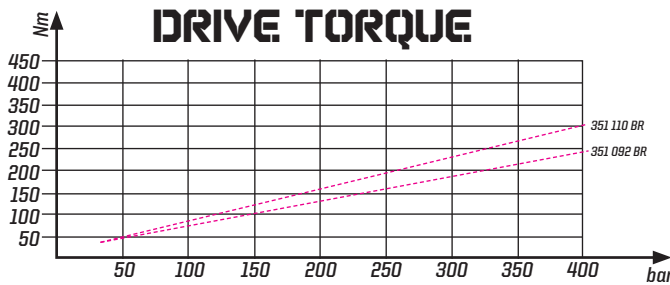
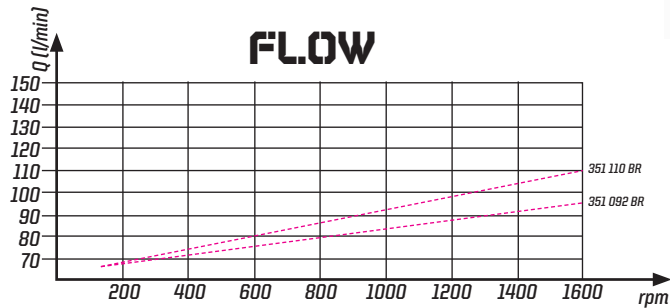
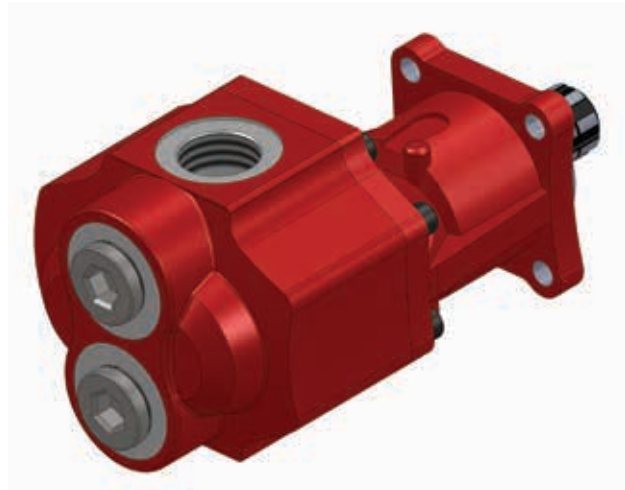
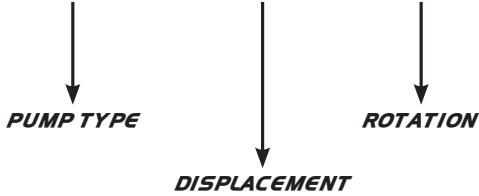


BS SERIAL GEAR PUMP

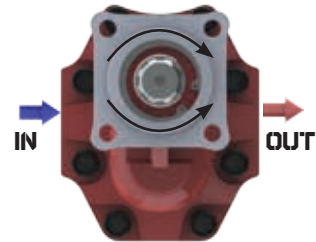
ISO

BI-ROTATIONAL  
XXX XXX XX



Fluid Temp. °C	Input Pres. Bar	Optimale K. Viscosity	Oil Filtering
0 / 100	0,3 / 1,7 bar	10 / 100 CST	> 200 bar : 25 um < 200 bar : 35 um

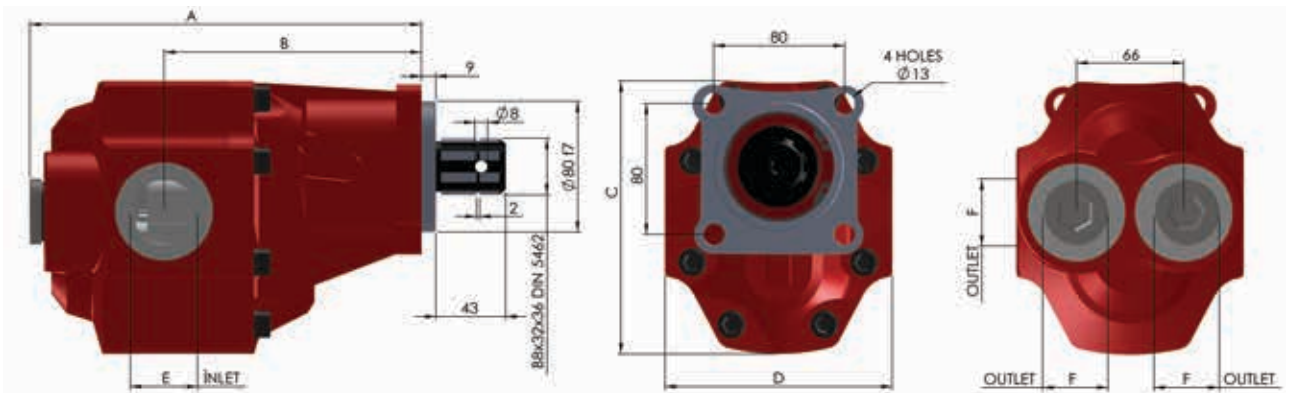
BI-ROTATIONAL PUMP



NOTE : THE ABOVE SPECIFICATIONS REFER TO OIL TYPE ISO VG 46 AT 50°

NOTE : SEE TECHNICAL PAGE TO CHANGE THE DIRECTION OF ROTATION

USED PLACED :  
DUMPER TRUCKS  
PRIVATE AIM WINCHES  
TRACTOR LADLES



Code	Displacement cm³/1000	Rotation	Working Pressure	A mm	B mm	C mm	D mm	E Inlet	F Outlet	Weight
351 092 BR	92	BI-ROTATIONAL	260	244	162	172	130	1" 1/4 G	1" 1/4 G	19
351 110 BR	110	BI-ROTATIONAL	220							