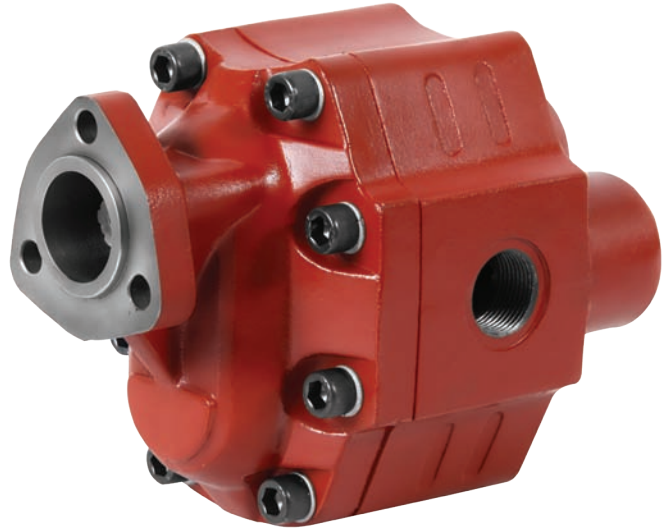
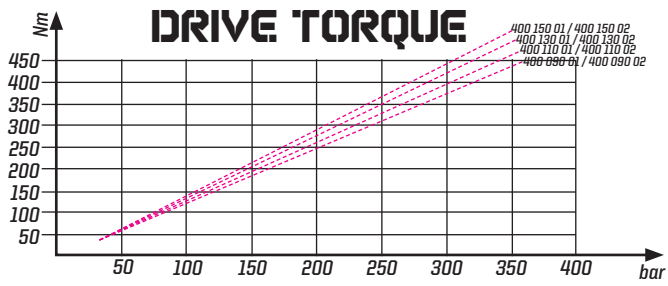
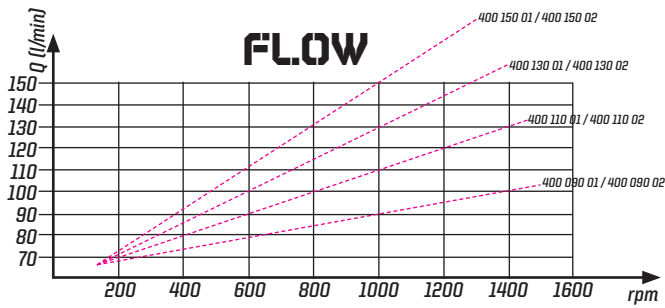
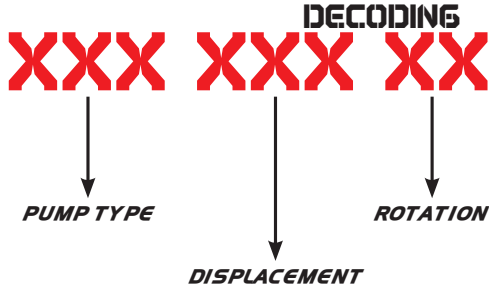


40 SERIAL GEAR PUMP

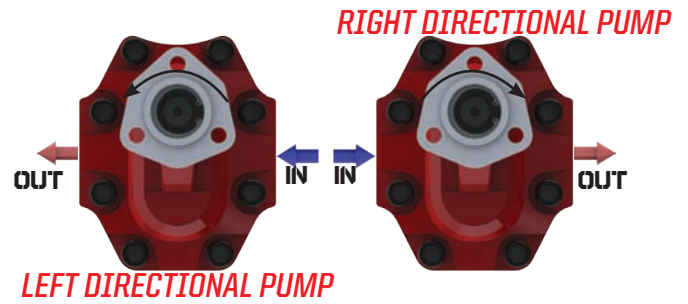
UNI



GEAR PUMPS



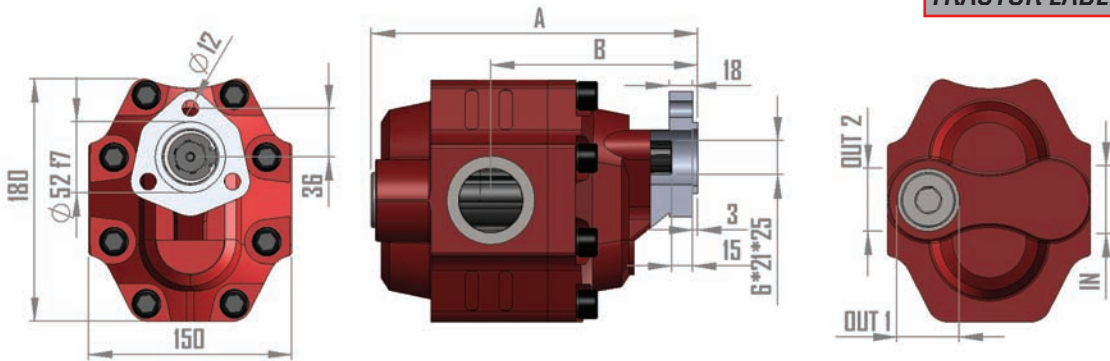
Fluid Temp. °C	Input Pres. Bar	Optimale K. Viscosity	Oil Filtering
0 / 100	0,3 / 1,7 bar	10 / 100 CST	> 200 bar : 25 um <200 bar : 35 um



NOTE : THE ABOVE SPECIFICATIONS REFER TO OIL TYPE ISO VG 46 AT 50°

NOTE : SEE TECHNICAL PAGE TO CHANGE THE DIRECTION OF ROTATION

USED PLACED :
DUMPER TRUCKS
PRIVATE AIM WINCHES
TRACTOR LADLES

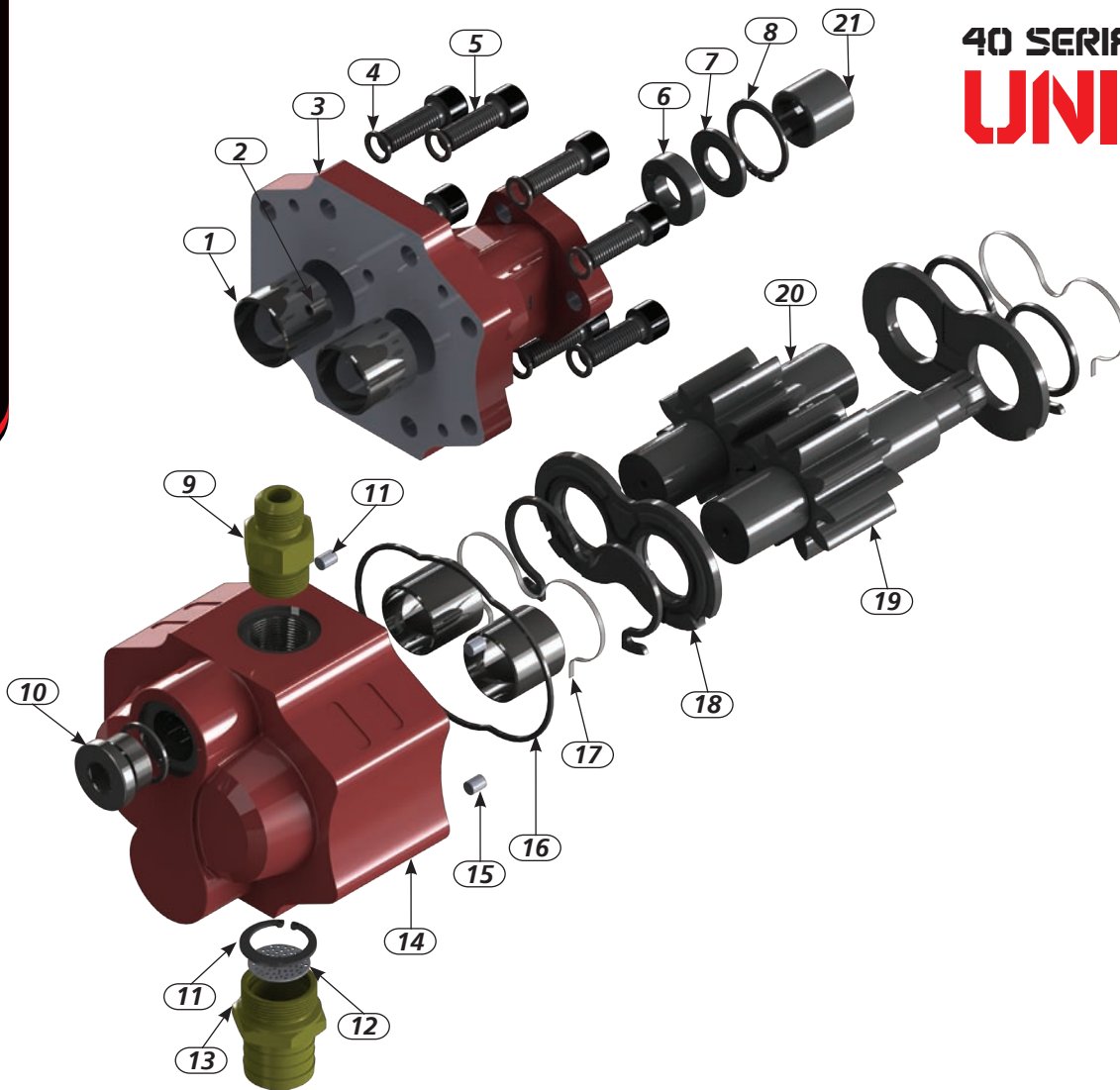


Code	Displacement cm ³ /1000	Rotation	Test Pressure	Max. Test Pressure	A	B	Oil Inlet	Oil Outlet	Max. Con. Speed Rpm	Max. Inter. Speed Rpm	Weight
400 090 01	90,5	Right	220	240	215	132	6 11/4"	6 1"	2500	3000	18
400 090 02	90,5	Left	220	240	215	132	6 11/4"	6 1"	2500	3000	18
400 110 01	110,5	Right	215	235	221	135	6 11/4"	6 1"	2450	2800	19
400 110 02	110,5	Left	215	235	221	135	6 11/4"	6 1"	2450	2800	19
400 130 01	130,5	Right	200	235	227	138	6 11/4"	6 1"	2150	2300	20
400 130 02	130,5	Left	200	220	227	138	6 11/4"	6 1"	2150	2300	20
400 150 01	149	Right	190	220	233	141	6 1 1/2"	6 1"	2000	2100	21
400 150 02	149	Left	190	220	233	141	6 1 1/2"	6 1"	2000	2100	21

Test Pressure : 60 sec

Max Test Pressure : 5 sec. Max.

40 SERIAL GEAR PUMP UNI



Pos: 14 Qty: 1



Body
Code: 020 080 105
For 400 090 01/400 090 02
Code: 020 080 033
For 400 110 01/400 110 02
Code: 020 080 106
For 400 130 01/400 130 02
Code: 020 080 107
For 400 150 01/400 150 02

Pos: 19 Qty: 1



Gear
Code: 020 090 114
For 400 090 01/400 090 02
Code: 020 090 078
For 400 110 01/400 110 02
Code: 020 090 116
For 400 130 01/400 130 02
Code: 020 090 118
For 400 150 01/400 150 02

Pos: 20 Qty: 1



Gear
Code: 020 090 115
For 400 090 01/400 090 02
Code: 020 090 079
For 400 110 01/400 110 02
Code: 020 090 117
For 400 130 01/400 130 02
Code: 020 080 119
For 400 150 01/400 150 02

<p>Pos: 1 Qty: 4</p> <p>Code: 020 060 106 Bush 38*42*38</p>	<p>Pos: 2 Qty: 1</p> <p>Code: 020 100 038 Screw M10*10</p>	<p>Pos: 3 Qty: 1</p> <p>Code: 020 080 069 Cover</p>	<p>Pos: 4 Qty: 8</p> <p>Code: 020 100 039 Washer M 12</p>	<p>Pos: 5 Qty: 8</p> <p>Code: 020 100 041 Screw M12*40</p>	<p>Pos: 6 Qty: 1</p> <p>Code: 020 040 201 Seal Mim 25*40*8</p>	<p>Pos: 7 Qty: 1</p> <p>Code: 020 090 077 Washer 26*40*2</p>
<p>Pos: 8 Qty: 1</p> <p>Code: 020 010 240 Circlip 472/40</p>	<p>Pos: 9 Qty: 1</p> <p>Code: 020 110 006 Nipple1"R 1"1/16</p>	<p>Pos: 10 Qty: 1</p> <p>Code: 020 090 080 Screw 1"</p>	<p>Pos: 11 Qty: 1</p> <p>Code: 020 010 235 Circlip 472/35</p>	<p>Pos: 12 Qty: 1</p> <p>Code: 020 090 027 Filter 1"</p>	<p>Pos: 13 Qty: 1</p> <p>Code: 020 110 007 Nipple1" 1/4</p>	<p>Pos: 15 Qty: 4</p> <p>Code: 020 020 106 Bearing 8*10,5</p>
<p>Pos: 16 Qty: 1</p> <p>Code: 020 031 305 O ring 126,67*2,62</p>	<p>Pos: 17 Qty: 2</p> <p>Code: 020 031 402 M ring</p>	<p>Pos: 18 Qty: 2</p> <p>Code: 020 090 016 Plate</p>				

www.steelium.com